

A a



Apple

B b



Banana



Baby BumbleBee™ Featuring the Baby Math™ Video Series at
www.BabyBumbleBee.com

C C



COW



Baby BumbleBee™ Featuring the Bee Smart Baby™ Spanish Vocabulary
Builder Video Series at www.BabyBumbleBee.com

D d



Dog



Baby BumbleBee™ Featuring the Bee Smart Baby™ Action Words™ Video
Series at www.BabyBumbleBee.com

E e



Elephant



Baby BumbleBee™ Featuring the Bee Smart Baby™ Vocabulary Builder™

Video Series at www.BabyBumbleBee.com

F f



Frog



Baby BumbleBeeTM Featuring the Baby MathTM Video Series at
www.BabyBumbleBee.com

Gg



Goat



Baby BumbleBee™ Featuring the Bee Smart Baby™ Spanish Vocabulary
Builder Video Series at www.BabyBumbleBee.com

Horse



Horse



Baby BumbleBee™ Featuring the Bee Smart Baby™ Action Words™ Video
Series at www.BabyBumbleBee.com

Iguana



Iguana

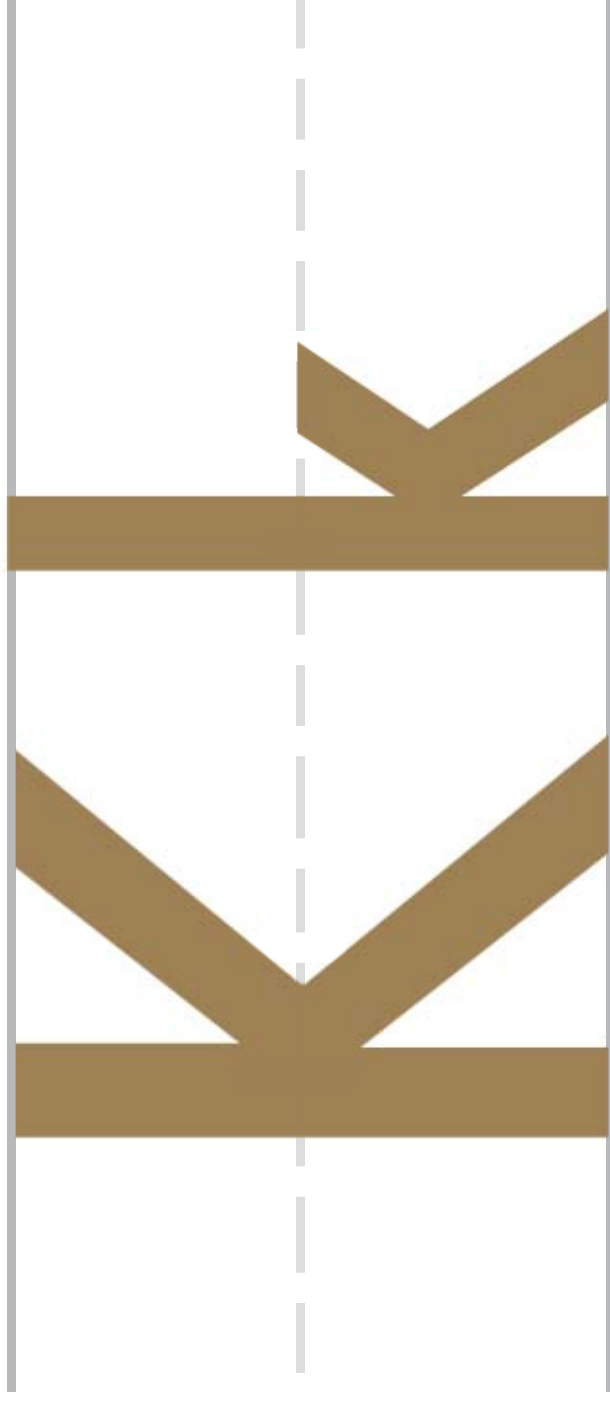
J j



Jacks

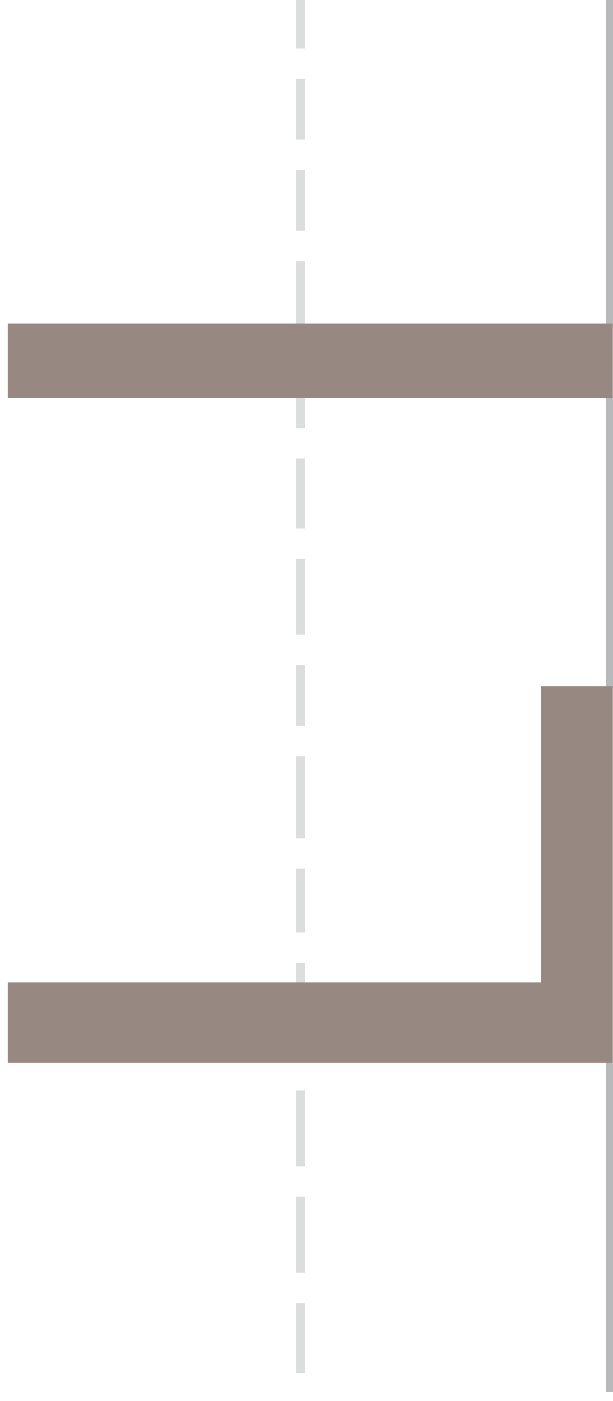


Baby BumbleBee™ Featuring the Baby Math™ Video Series at
www.BabyBumbleBee.com



Key





Lamb



Baby BumbleBee™ Featuring the Bee Smart Baby™ Action Words™ Video Series at www.BabyBumbleBee.com

N n



Map



Baby BumbleBee™ Featuring the Bee Smart Baby™ Vocabulary Builder™
Video Series at www.BabyBumbleBee.com

N n



Nest



Baby BumbleBee™ Featuring the Baby Math™ Video Series at
www.BabyBumbleBee.com

O O



Orange



Baby BumbleBee™ Featuring the Bee Smart Baby™ Spanish Vocabulary
Builder Video Series at www.BabyBumbleBee.com

P p



Plane

Baby BumbleBee™ Featuring the Bee Smart Baby™ Action Words™ Video
Series at www.BabyBumbleBee.com

Q q



Quarter



Baby BumbleBee™ Featuring the Bee Smart Baby™ Vocabulary Builder™

Video Series at www.BabyBumbleBee.com

Rr



Rabbit



Baby BumbleBeeTM Featuring the Baby MathTM Video Series at
www.BabyBumbleBee.com

S S



Shoes



Baby BumbleBee™ Featuring the Bee Smart Baby™ Spanish Vocabulary
Builder Video Series at www.BabyBumbleBee.com

T t



Tricycle



Baby BumbleBee™ Featuring the Bee Smart Baby™ Action Words™ Video
Series at www.BabyBumbleBee.com

U U



Umbrella



Baby BumbleBee™ Featuring the Bee Smart Baby™ Vocabulary Builder™

Video Series at www.BabyBumbleBee.com

V V



violin



Baby BumbleBee™ Featuring the Baby Math™ Video Series at
www.BabyBumbleBee.com

W W

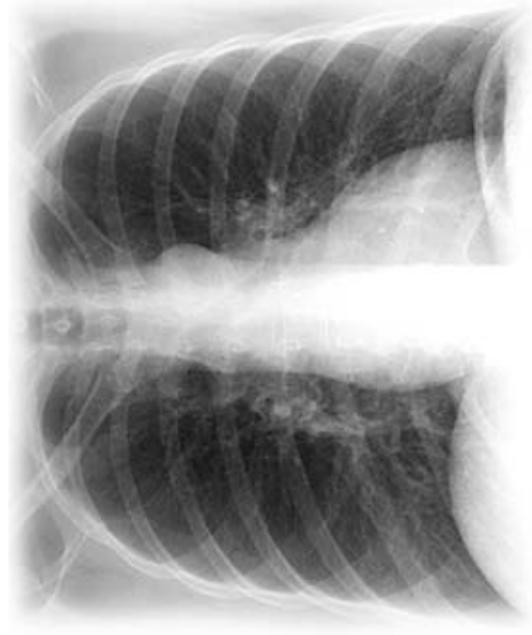


Wagon



Baby BumbleBee™ Featuring the Bee Smart Baby™ Spanish Vocabulary
Builder Video Series at www.BabyBumbleBee.com

X X



X-Ray



Baby BumbleBee™ Featuring the Bee Smart Baby™ Action Words™ Video
Series at www.BabyBumbleBee.com

Y Y



Yarn



Baby BumbleBee™ Featuring the Bee Smart Baby™ Vocabulary Builder™
Video Series at www.BabyBumbleBee.com

Z Z



Zipper



Baby BumbleBeeTM Featuring the Baby MathTM Video Series at
www.BabyBumbleBee.com



Alphabet Posters Suggestions for Use:

Most Babies & Toddlers can learn the alphabet fairly easily. Placing these posters around the baby's room at an early age (about 6-10 months) helps. If you hang the posters around the room at your eye-level and walk the baby or toddler on your hip around the room pointing out the letters one-by-one each day (or even 2-3 times a week), your child will begin to recognize the letters very early. This whole process takes only a few minutes each day & generates great results. I did this with each child, and both could identify all the letters in the alphabet by 14 months of age

As you walk around, identify both UPPER & lower case letters by saying something like "Big A, Little a, look - A is for apple" Point to each item as you name it. Don't expect immediate results, but as your baby begins to speak, you will find that he or she knows the letters!

After having used the posters in this way for a while - you can print out the flash cards and make up games with your toddler. You can have your toddler match the Capital letter to the Lowercase letter or vice versa.

None of this should be high pressure - If your child is not interested then simply try it later. Most kids are fascinated by the shapes of the letters. You can also try having your child trace the letter with his hand. You will, of course, have to guide it with your own hand.

[Contact Us by Email](#) or Call 888-984-5500

Copyright © 2001 Educational Products for Infancy, Inc. All rights reserved
Use of this site indicates you accept our